

**TECHNOLOGICAL UNIVERSITY DUBLIN**  
**Conservatoire**

**Bachelor of Music TU963**

**Sample Entrance Test**

Name: \_\_\_\_\_

CAO No: \_\_\_\_\_

Instrument/Voice: \_\_\_\_\_

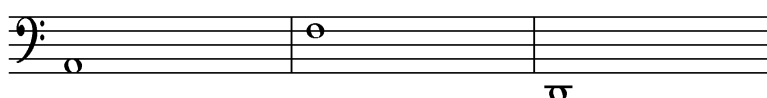
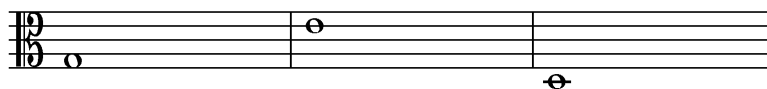
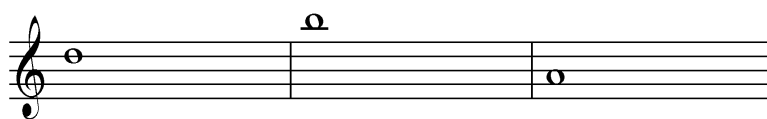
Telephone Number: \_\_\_\_\_

*For examiner use only*

<b>Question</b>	<b>Marks awarded</b>
<b>1</b>	<b>/9</b>
<b>2</b>	<b>/24</b>
<b>3</b>	<b>/25</b>
<b>4</b>	<b>/12</b>
<b>5</b>	<b>/16</b>
<b>6</b>	<b>/14</b>
<b>Written total</b>	<b>/100</b>
<b>Aural total</b>	<b>/100</b>
<b>Audiation total</b>	<b>/100</b>

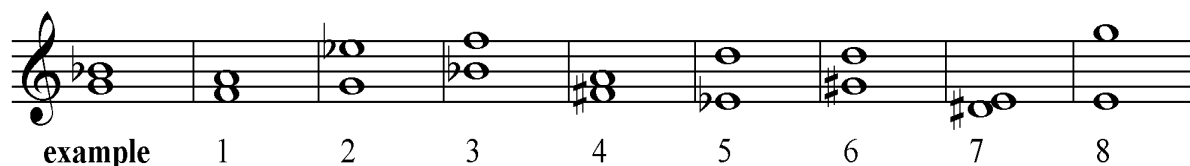
Q1 Name the following notes:

(9 marks)



Q2 Fully identify the following intervals

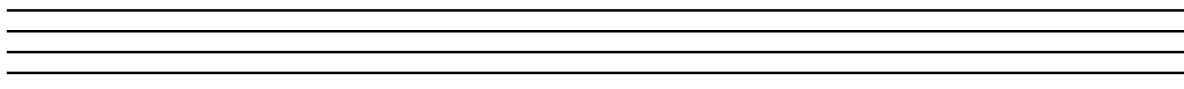
(24 marks)



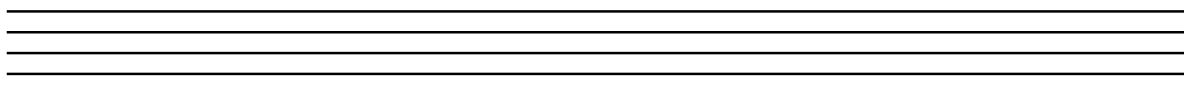
	<b>Interval Type/Quality:</b> Perfect/Major/Minor/Augmented/Diminished	<b>Interval Size:</b> 2 <sup>nd</sup> , 3 <sup>rd</sup> , 4 <sup>th</sup> etc
<i>example</i>	<i>Minor</i>	<i>3rd</i>
<b>1</b>		
<b>2</b>		
<b>3</b>		
<b>4</b>		
<b>5</b>		
<b>6</b>		
<b>7</b>		
<b>8</b>		

Q3 Write one octave of the following scales (use key signatures): (25 marks)

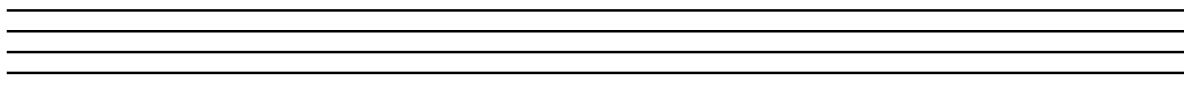
(i) Bass clef: D major (ascending) (5)



(ii) Treble clef: G harmonic minor (ascending) (10)



(iii) Bass clef: E melodic minor (ascending AND descending) (10)

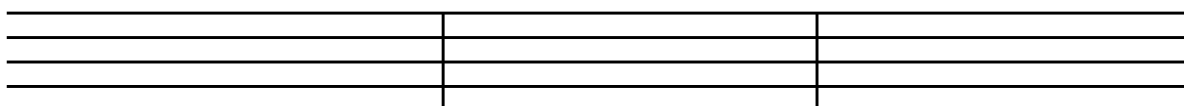


Q4 Write the following **TONIC** triads with key signatures (12 marks)

(i) G major: **treble clef, root (5/3) position**

(ii) C# minor: **treble clef, first (6/3) position**

(iii) B-flat major: **bass clef, second (6/4) position**




(i)

(ii)

(iii)



Q6 Explain the following musical terms/directions:

(14 marks)

Andante \_\_\_\_\_

Crescendo \_\_\_\_\_

Ritardando \_\_\_\_\_

Meno mosso \_\_\_\_\_

Con moto \_\_\_\_\_

Morendo \_\_\_\_\_

*ff* \_\_\_\_\_

Q7 Add 12 bars to the given opening phrase to complete a 16 bar melody

- You may include a modulation if you wish
- Include dynamics and phrasing/articulation as appropriate

**Allegretto**

mf

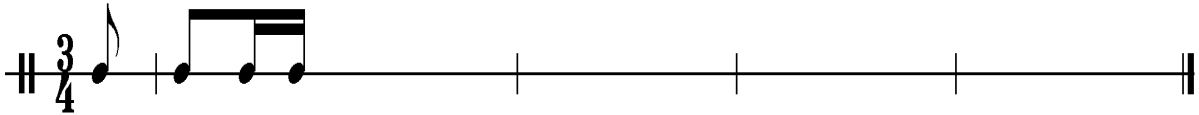
5

9

13

## Sample Aural Entrance Test

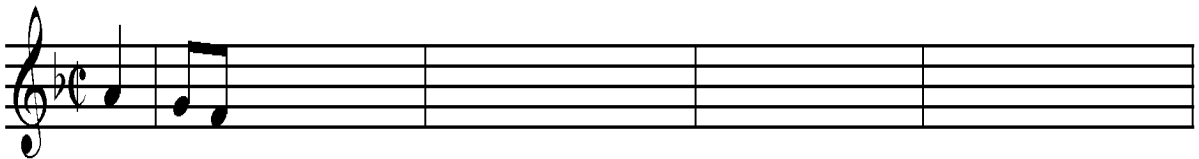
- Q1 Rhythmic Dictation: Complete **the rhythm only** of this 4 bar passage which you hear played 5 times. The opening four notes are given



Examiner's answer:



- Q2 Melodic Dictation: Complete **the rhythm and melody** of this phrase which you hear played 5 times. The opening 3 notes are given



Examiner's answer:



Q3 Identify fully the following intervals **which you hear** (each played twice)  
Give both quality (major/minor etc) and number (2<sup>nd</sup>/3<sup>rd</sup> etc)

1. \_\_\_\_\_

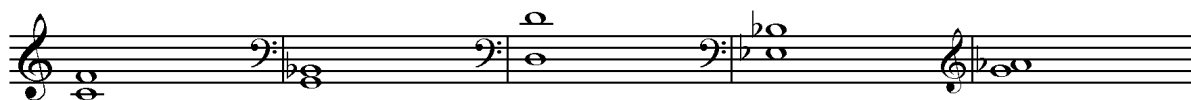
2. \_\_\_\_\_

3. \_\_\_\_\_

4. \_\_\_\_\_

5. \_\_\_\_\_

Examiner's answer:



Q4 Identify the following triads **which you hear** as major or minor

1. \_\_\_\_\_

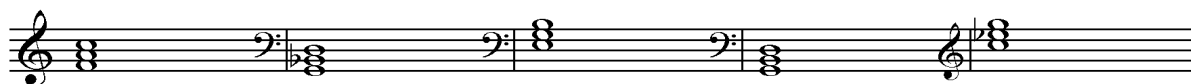
2. \_\_\_\_\_

3. \_\_\_\_\_

4. \_\_\_\_\_

5. \_\_\_\_\_

Examiner's answer:



Q5 Respond to this short piece by Edvard Grieg which you will now hear. Write **two paragraphs** with **careful attention to sentence construction and basic grammar**, commenting on tonality/meter/rhythm/instrumentation and anything else you might deem of interest

**Listen: Grieg: Norwegian Dance No.2**

### **Audiation Test**

The third and final part of the entrance test is an aural aptitude test which does not require any specific training or preparation and is designed to give an indication of a candidate's aptitude for music studies. The idea is quite simple – you hear a short musical phrase played twice and by simply ticking a box you indicate if the second playing was (i) the same as the first, (ii) rhythmically different or (iii) had a change in one or more pitches. We will explain all of this to you clearly at the exam and we even have a short practice run to make sure everyone follows the idea.